

ASSA ABLOY



The CARITAS Project



AIA CHICAGO
HEALTHCARE
KNOWLEDGE
COMMUNITY

along with the support of AIA Chicago and HFSE present:

The 2015 Chicago Healthcare Student Charette: Realizing Behavioral Health and Wellbeing Within the Village

Tuesday, October 6, 2015

2 Sessions (G03 / G04) 2:30–3:30 PM / 4:00–5:00 PM

Room 329

Facilitated by:

David Nienhueser (Kaufman Hall)

Terence Houk (the Eckroth Planning Group)

We would like to acknowledge that without the support of Assa Abloy, this event would not have been possible!

ASSA ABLOY

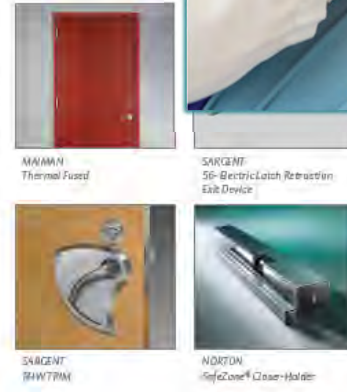
ASSA ABLOY is the global leader in door opening solutions, dedicated to satisfying end-user needs for security, safety and convenience



Behavioral Health Checklist

- Doors and Frames**
 - CECO DOOR and CURRIES Frames with Hospital Stop
 - CECO DOOR and CURRIES Patient Room Access Doors
 - CECO DOOR, CURRIES, GRAHAM, MAIMAN, & SMP Acoustic Openings
 - MAIMAN Thermal Fused Doors
 - SMP Lead Lined and Stainless Steel Doors and Frames
- Closing & Control Devices**
 - NORTON SafeZone® Closer-Holder
 - RIXSON Door Closer
- Powered Products**
 - Electrified Mortise Locks Fail-Safe & Fail-Secure
 - Multi-point Locks for pairs of doors
 - SARGENT 56- Electric Latch Retraction Exit Device
 - SECURITRON AccuPower™ Power Supplies
 - SECURITRON Electromagnetic Locks
- Safety and Security Devices**

- Accessories**
- Tracks, Hinges & Pivots**
 - MARKAR Continuous H
 - MARKAR MB, and McKINNEY Rescue Pivot
 - PEMKO Double Swing H
 - RIXSON Pivots
- Operating Trim**
 - ROCKWOOD Pulls
- Stops & Holders**
 - PEMKO Emergency Rele
 - RIXSON Concealed Dre
 - RIXSON Electromagnet
 - ROCKWOOD Stops
- Protective Plates & Trim**
 - ROCKWOOD ArmorKid



Thanks Also: Panel of Experts

We reached out to a number of people from around the country, who we know have a strong grasp of Generative Space, Design and Healthcare. These five individuals will give their initial impressions of the progress thus far during the second session (please join us from 4:00-5:00). With us today:

- **Jessica Gutierrez-Rodriguez** – Texas Center for Infectious Disease
- **Fiona de Vos, PhD** – Studio dVO
- **Frank Pitts, FACHA** – architecture+
- **Bruce Raber** – Stantec Architecture
- **Frank Drabik, RN** – Norwegian American Hospital

Client: Norwegian American Hospital

Originally the idea for this year's Charette was re-envisioning a recent project (in this case, a recently renovated IP Behavioral Unit). Upon visiting NAH and learning of their Behavioral program, the opportunity to assist the client with a missing piece of their mission within the community could not be overlooked. So the student teams were tasked with developing an ambulatory / outpatient / community environment, with a program they felt would best serve the surrounding neighborhood.

Hospital Facts:

- Located in Chicago's Humboldt Park neighborhood
- Originally a Scandinavian community, now predominantly Latino
- Acute Care Facility – 270 Licensed Beds / 173 Staffed
- 3 Inpatient Behavioral Health Units (makes up over 1/3 of Census) – one unit renovated in 2013, and two built ten years ago
- Medical Detox Program
- Intensive Outpatient Program – also located in the hospital

As in years past, we were lucky to be able to host five teams from around the country. The teams were made of students from multiple educational backgrounds.

They came to learn of a paradigm shift; of Generative Space, and the effects it might have if applied to our world. Please welcome...

Schools:

Iowa State University

Kansas State University

New York School of Interior Design

Philadelphia University

Texas A&M University

Their Hosts:

CannonDesign

Perkins + Will

HKS

Legat Architects

the Eckroth Planning Group

Charette Pre-Assignment

The teams were encouraged to tour a behavioral care environment of their choosing prior to arriving in Chicago. While there, they were to fill out 3 index cards with a word or phrase evoked by the space visited. These cards were then combined with their teammates while in Chicago to be shared with the Charette attendees. Using this experiential procedure, each team was tasked with developing a Vision Statement to use as a platform for solving the Behavioral Health Charette Challenge set before them. Here are a few results of their Pre-Assignment...

Pressure

Disconnected

Social

Beige

Sterile

Enclosed

Supportive

Vision Statement...

“Pressure operates at multiple scales in culture. Our aim is to acknowledge this pressure, to release one from it, or simply redirect its source.

To Disconnect from pressure is both positive and negative. Our aim is to make the proper patient connections.

Senses are a metaphor and literal concept for design.”

Team: Yongyeon Cho, Yifan Luo, Casey Tiedman

Faculty Advisor: Cameron Campbell, AIA

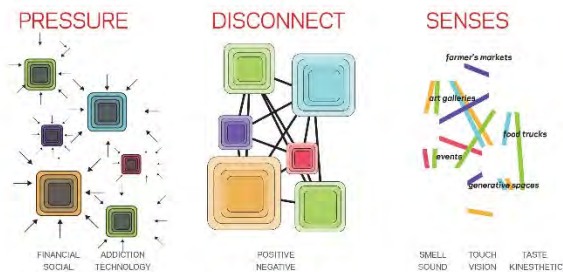
generative transition spaces

Vision Statement

Pressure operates at multiple scales in culture – social, technological, financial... our project aims to acknowledge this pressure, to release one from pressure or simply redirect the source of pressure.

To disconnect from pressure is both positive and negative. For example, to remove oneself from technology can be a relief but can also generate anxiety. Our project aims to make key connections for light and view while maintaining the privacy and dignity of patients.

Senses are a metaphor and literal concept for design. The interrelationship of senses is an opportunity to make a better place.



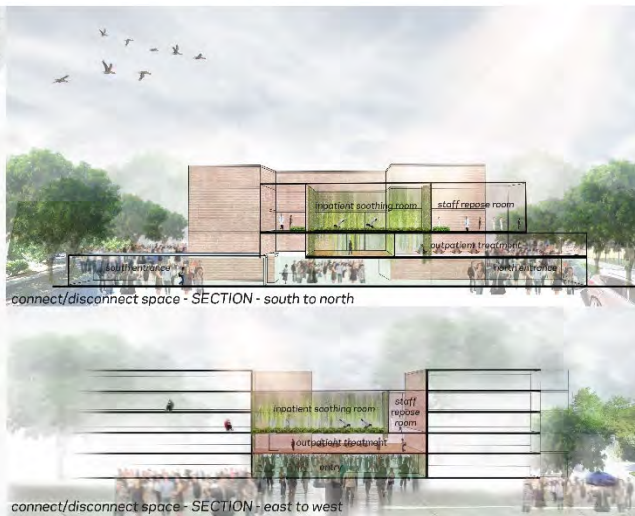
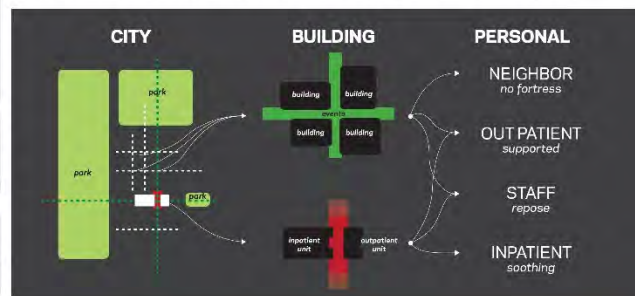
Solution Objectives

Our project operates at three scales: the city, the building and the personal.

At the **city scale** we look to release the pressure on the hospital by closing roads and expanding green belts to connect to Humboldt park (and Division road).

At the **building scale** we intend to remove the current connection between the hospital and the professional office building. This disconnect will be an opportunity to reconnect the site access and provide daylight to the 3rd floor in-patient behavior health unit. The outpatient care is an extension of this out of the confines of the building.

There are many opportunities at the **personal scale** and the connection to the senses is key. By opening the "disconnect/connect space" the inpatient unit will be connected to the light. This provides an opportunity to create a soothing room surrounded by a staff repose room. As we expand into the site the outpatient opportunities will include ways to connect outpatients to the community through exhibit galleries and performance spaces (where patients can perform and exhibit creative work), farmers markets (where patients can sell their goods from the community garden).



Vision Statement...

“Create a community which one simultaneously owns and to which one belongs.”

Team: Jacob Kelly-Salo, Chris Sanford, Kendra Vander Baan

Faculty Advisor: Susanne Siepl-Coates

THE 2015 CHICAGO HEALTHCARE STUDENT CHARETTE, SPONSORED BY ASSA ABLOY

TO CREATE A COMMUNITY WHICH ONE SIMULTANEOUSLY OWNS AND TO WHICH ONE BELONGS

Problem:

- Patients of Norwegian American experience stigmatization
- The Humboldt Park neighborhood is struggling to renew itself without losing its identity

Goal:

- Ease transition of outpatients into independence
- Give residents the opportunity to experience themselves as members of the Humboldt Park community

Proposal:

- The design uses concentric circles of increasing community integration to encourage mutually beneficial interaction



Results:
Much in the same way the healing space benefits the patients, the community itself is a beneficiary of this intervention

KANSAS STATE UNIVERSITY

Chris Sanford Special Thanks:
 Jacob Kelly-Sahn Gabriela Perez
 Kandra Vander Baan Samantha Duba
 Susanna Siepl-Coates & the Office of P + W

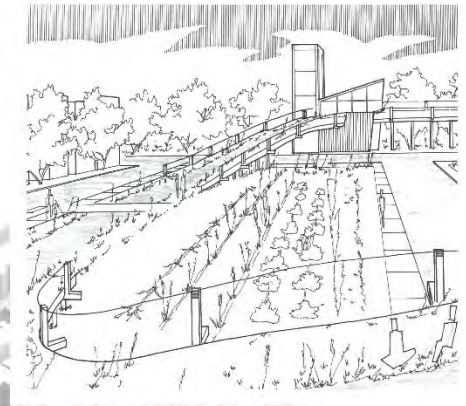
PERKINS + WILL



The design threads the community into the larger context of Humboldt Park by completing the unfinished walking loop

The activities of daily living which ease the patients' reintegration manifest themselves in the program of the community

- Marketplace
- Chapel
- Art Facility
- Pool
- Classrooms
- Garden
- Recreation
- Laundromat
- Daycare



THE MARKETPLACE AND GARDEN



THE RAISED PATH



Vision Statement...

“Our vision is to create an informal and community-based supportive facility that promotes flourishing, recovery and well being.”

Team: Xiao Liu, Brianna Scheid, Jamina Silen-Rauchman, Sharon Wong

Faculty Advisor: Dan Friedman



Existing Site

Vision Statement

Our vision is to create an informal, community based supportive facility that promotes flourishing, recovery and well-being

Goals:

- Creating rich + holistic patient experiences
- Providing opportunity that fosters health vitality + well-being
- Adapting to patient needs in a sustainable systemic way



Proposed Additional Facility Location



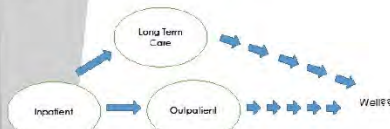
Concept Image

Inspired by the hug and embrace our project focuses on the patient experience to develop a community which flourishes through connectivity between patients, staff and the community. Our environment strives to connect patients and provide moments for individual and group treatment which are **supportive** and **holistic**. Our plan helps to establish relationships among patients and staff as well as encourage a sense of community. Through the principles of **generative design** the facility will systematically improve the lives of patients and enhance their experience as well as improve on the effectiveness of the organization.

Monitor Health Program Needs



Typical Facility



New Design Facility



Program:

- Ground Floor**
 Reception
 Waiting Area
 Intake Rooms
 Group Therapies
 Individual Therapy Rooms
 Classrooms
 Substance Abuse Area
 Bathrooms
 Storage

2nd Floor

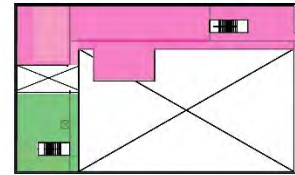
- Career Center
 Café
 Kitchen
 Food Pantry
 Library
 Media Room
 Music/ Art Rooms
 Hair Salon
 Multipurpose Room
 Gym
 Laundry Room
 Employee Lounge
 Bathrooms

3rd Floor

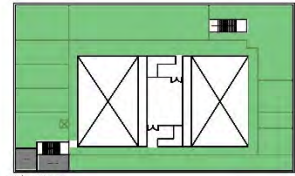
- Patient Suites
 Group Activity Areas
 Nurse's Station
 Employee Lounge
 Bathrooms

4th Floor

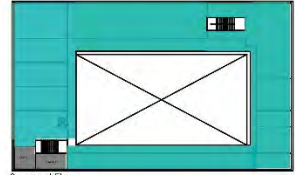
- Inpatient Activity Rooms
 Inpatient Employee Lounge
 Overlook
 Rooftop



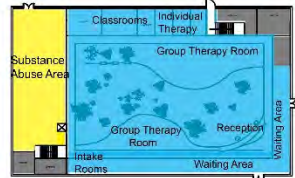
Fourth Floor



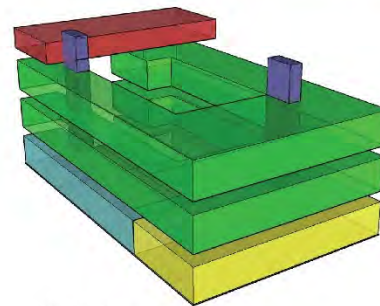
Third Floor



Second Floor



Ground Floor



Stacking Diagram



Proposed In-patient Informal Gathering Alcove



Proposed In-patient Bedroom

- INPATIENT SPACES
- STAIR
- TRANSITIONAL SPACES
- OUTPATIENT SPACES
- SUBSTANCE ABUSE CENTER



Materials + Finishes

Vision Statement...

“Create a physical and social experience that breaks the patterns and stereotypes of behavioral health through early diagnosis and community outreach.”

Team: Norell Ferguson, Meghan Laky, Pirouz Rezvanian

Faculty Advisor: BJ Miller

THE SEED PROJECT

Sensory Education for Early Diagnosis

PHILADELPHIA UNIVERSITY
 Norell Ferguson, Meghan Laky, Pirouz Rezvanian
 Advisor: BJ Miller
 Host Firm: Legat Architects



The SEED Program:

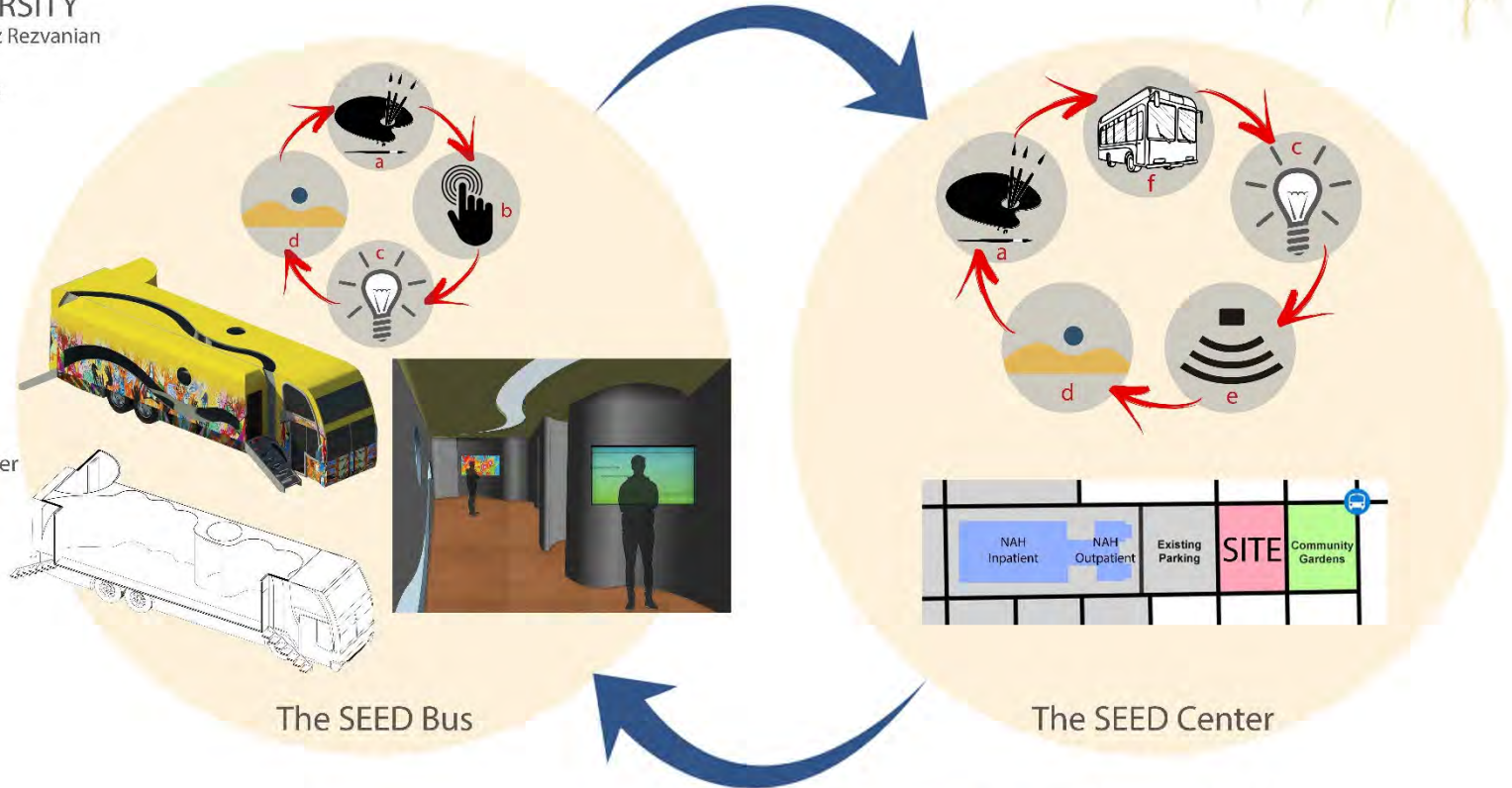
- a- Community Driven Art Gallery
- b- Diagnosis Through Games
- c- Sensory Coping Experience
- d- Therapy and Counseling
- e- Education in Public Amphitheater
- f- SEED Bus



The 2015 Chicago Healthcare Student Charette

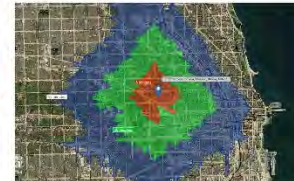
Project Vision:

Create a physical and social experience that breaks the patterns and stereotypes of behavioral health through early diagnosis and community outreach



Objectives:

1. Creating an ecosystem for the community based at the SEED center at NAH to promote community outreach and increasing public awareness.
2. Increasing early diagnosis of behavioral health within the adolescent population through alternative coping methods such as sensory therapy.
3. Measuring systemic pattern-changing beliefs of behavioral health stigmas.



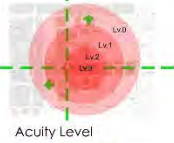
Metrics:

1. Number of news-related local articles on behavioral health on adolescent.
2. Number of diagnosed "patients" before and after implementation of the program.
3. Number of visitors at the SEED centers annually after the start of the program.
4. Number of active art community participants in the SEED program.

Vision Statement...

“An informal application of transitional care, which supports a soft curve of continuum of care is the vision of our project.”

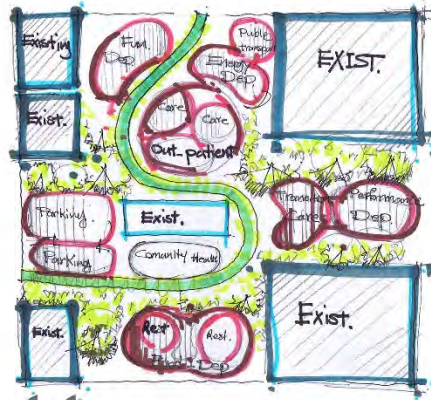
Team: Mohammadhossein Arabzadeh, Arsalan Gharaveis, Gaoyang Ye
Faculty Advisor: Zhipeng Lu



LEAST ACUTE

MOST ACUTE

- Housing
- Restaurant
- Laugh Clubs
- Dance Department
- Painting Academy
- Swimming pools
- Meditation
- Sport Centers
- Energy medicine
- Naturopathy
- Ayurvedic medicine
- Spa Centers
- Food Department
- Yoga
- AA group
- Chiropractic
- Acupuncture
- Faith healing
- Senior Residents
- Transitional care
- Quiet Rooms
- ER
- Existing Building



Informal application of transitional care, which supports a soft curve of continuum care.

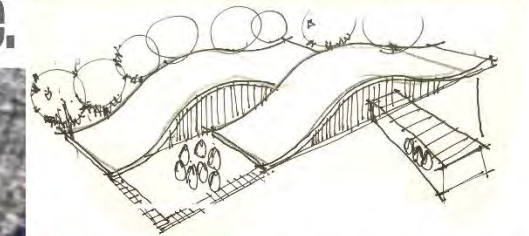
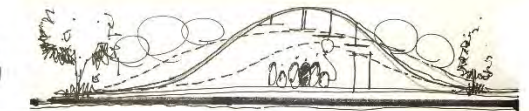
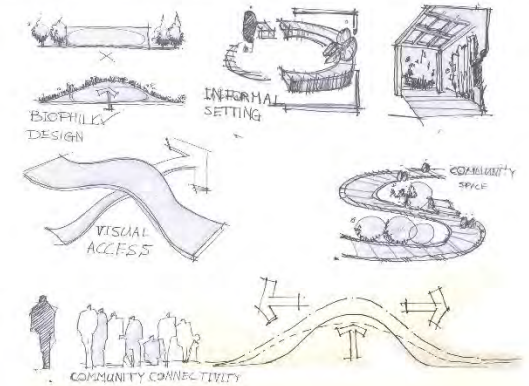


On the left: existing site - On the Right: Designed site
 This site is designed to not only fill out the empty section on the park but also empower the existing facility in terms of creating attraction for more and more people and enhance both mental and physical condition of the neighborhood.

Flexible design without boundaries of formal spaces can be a prototype which will be repeated, modified and tweaked to accommodate the needs of the users.

This project is governed by a smarter, more natural, more humane approach as opposed to Security and Durability.

In the "Wellness Village" we respect people who are coming in this facility to feel good and live a better life.



Texas A&M University
 Arsalan Gharaveis
 Mohammadossein Arabzadeh
 Gaoyang Ye
 Advisor: Zhipeng Lu

Eckroth Planning Group, Inc.
 Mentors -
 Terence B. Houk
 Chisako Fukasa

2015 Chicago Healthcare Student Charette sponsored by:
Assa Abloy

THANKS!

For starting down this new fork in the road with
US.

Please join us after 5:00 PM in the Exhibition
Hall where the students and their Boards will
be available for additional discussion.